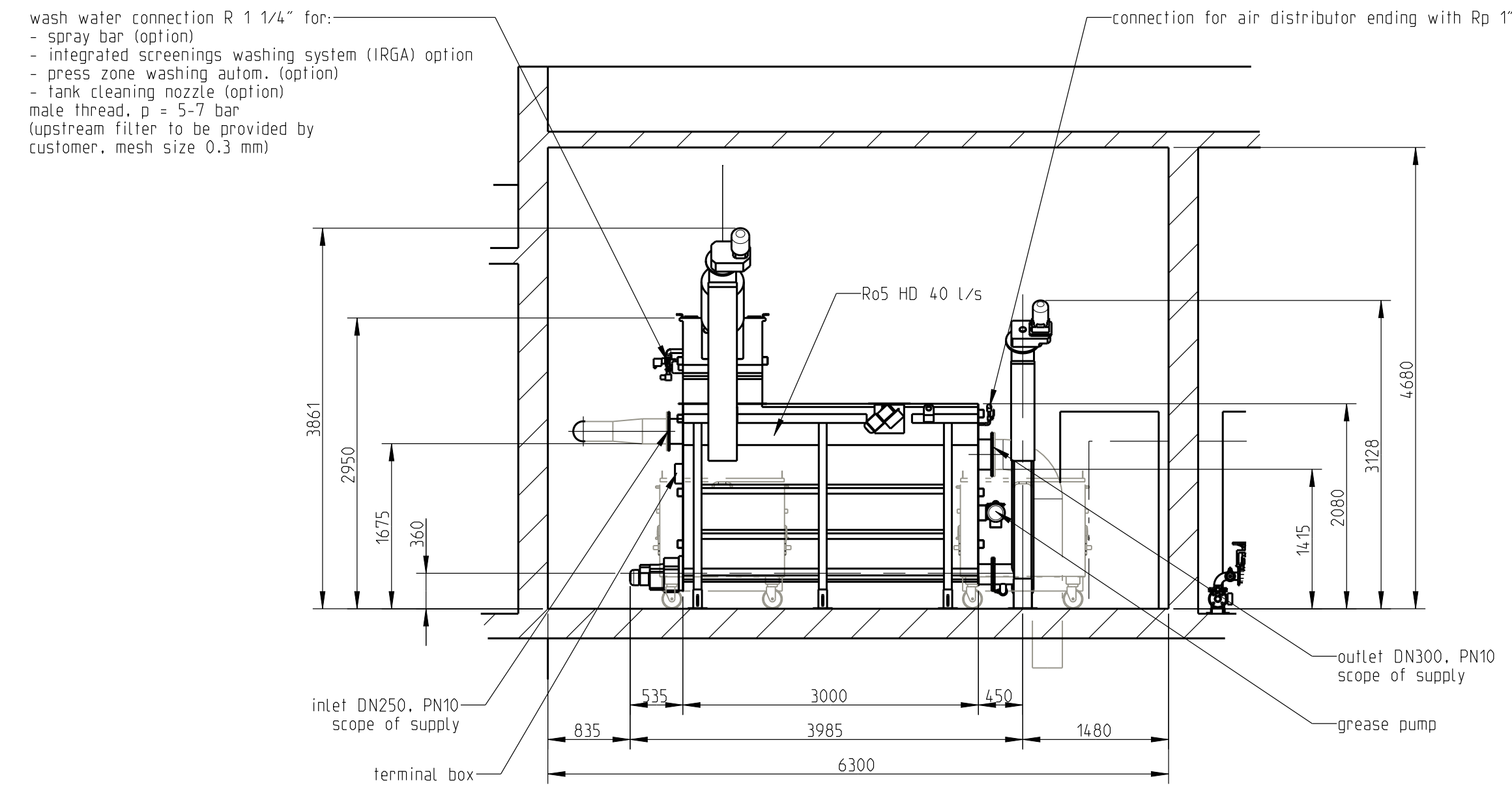
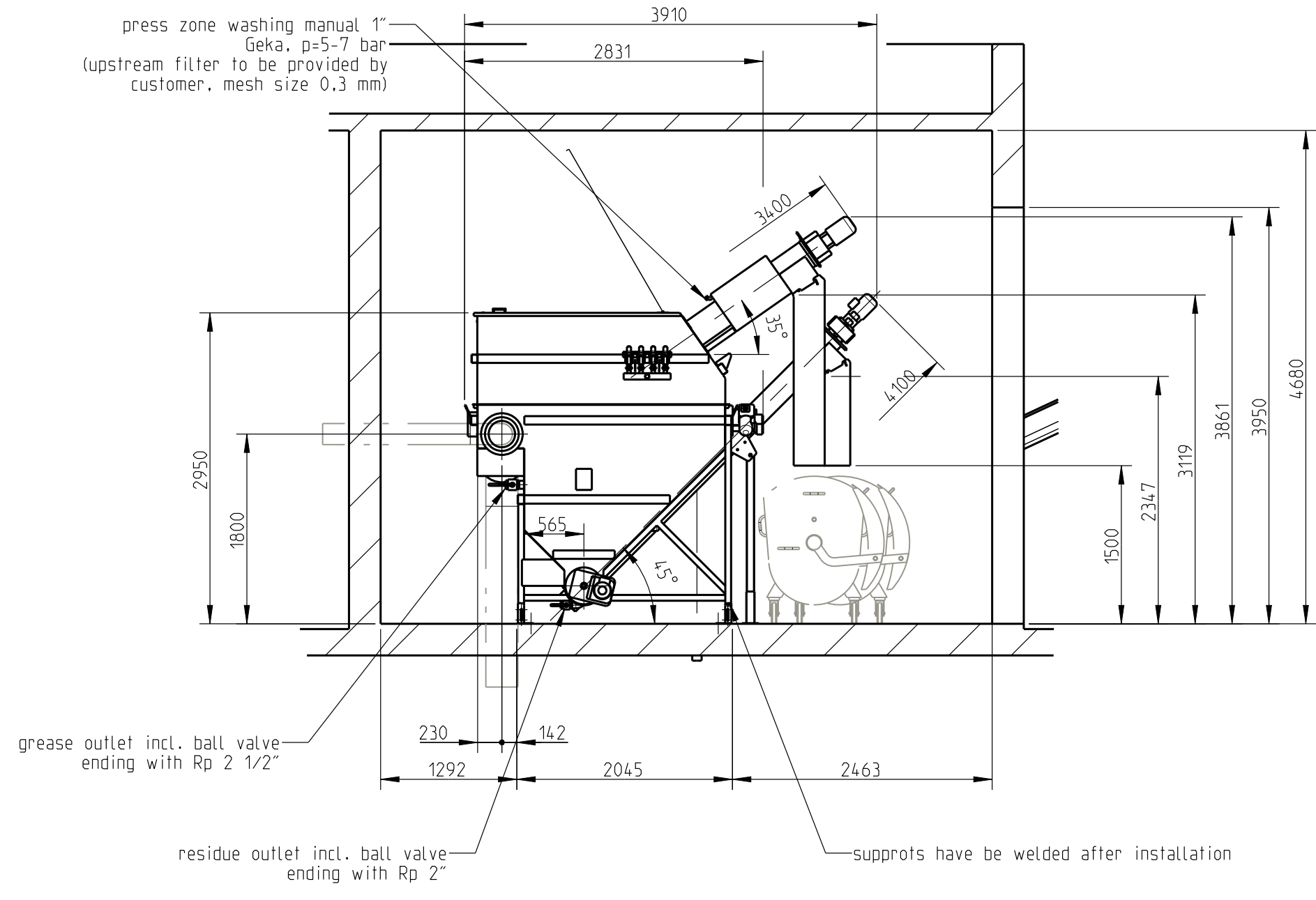


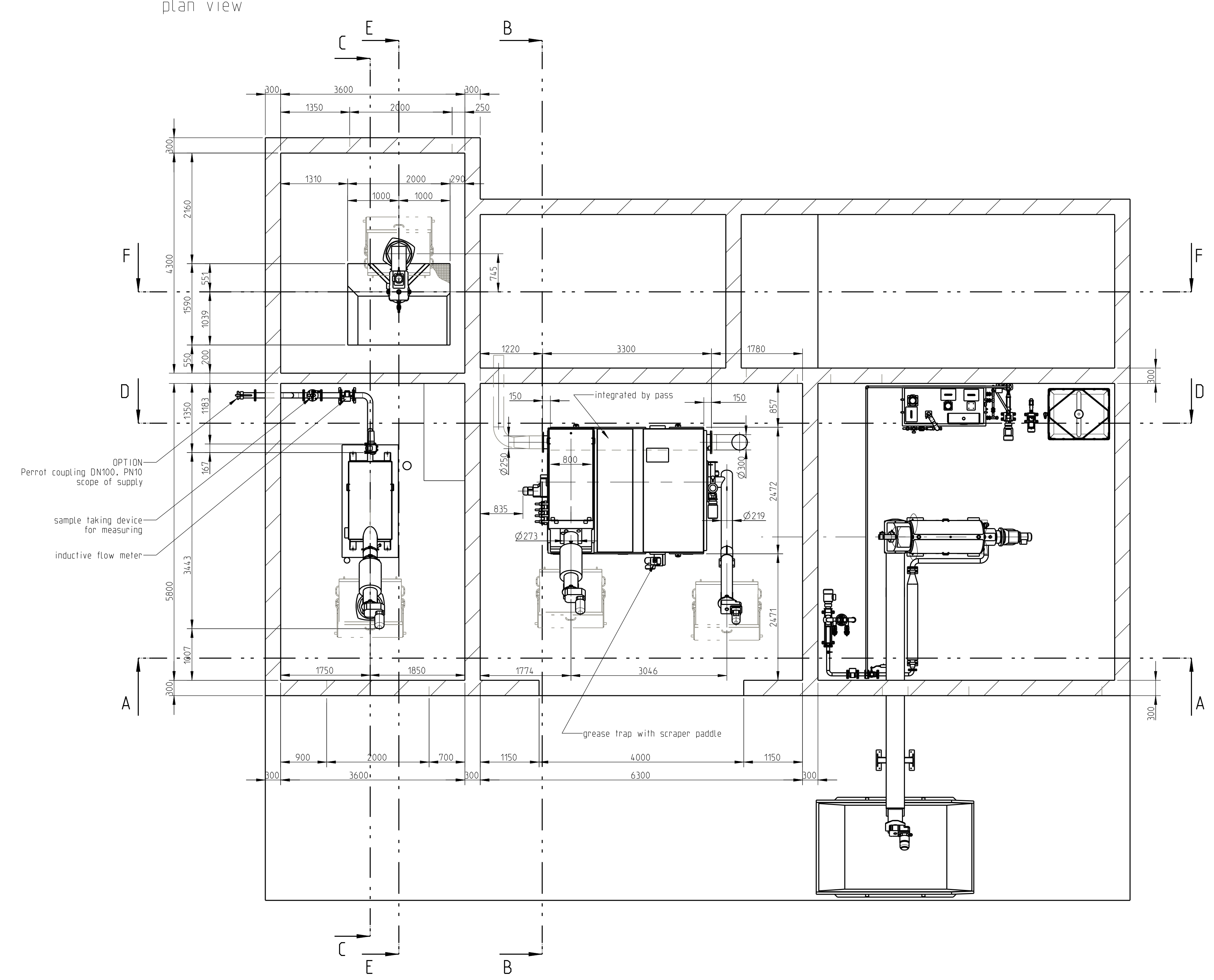
section A-A



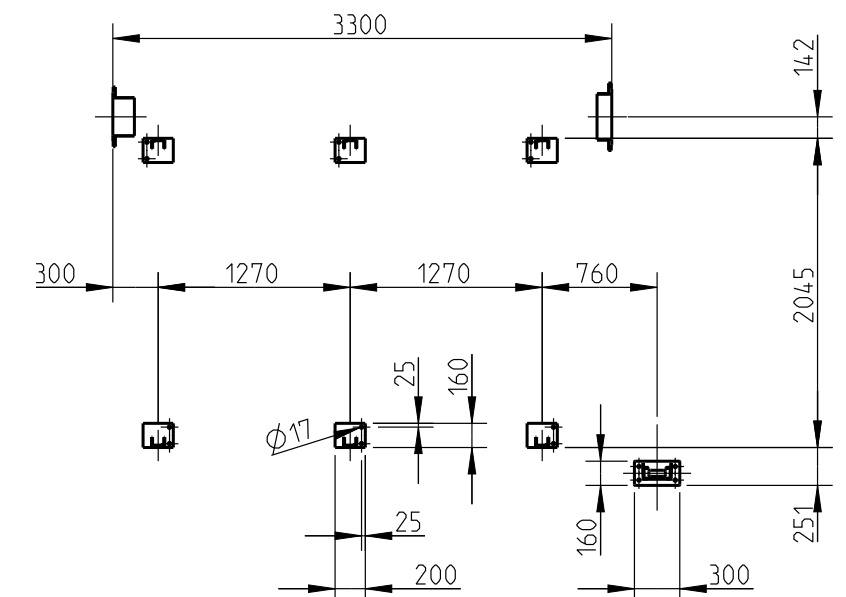
section B-B



plan view

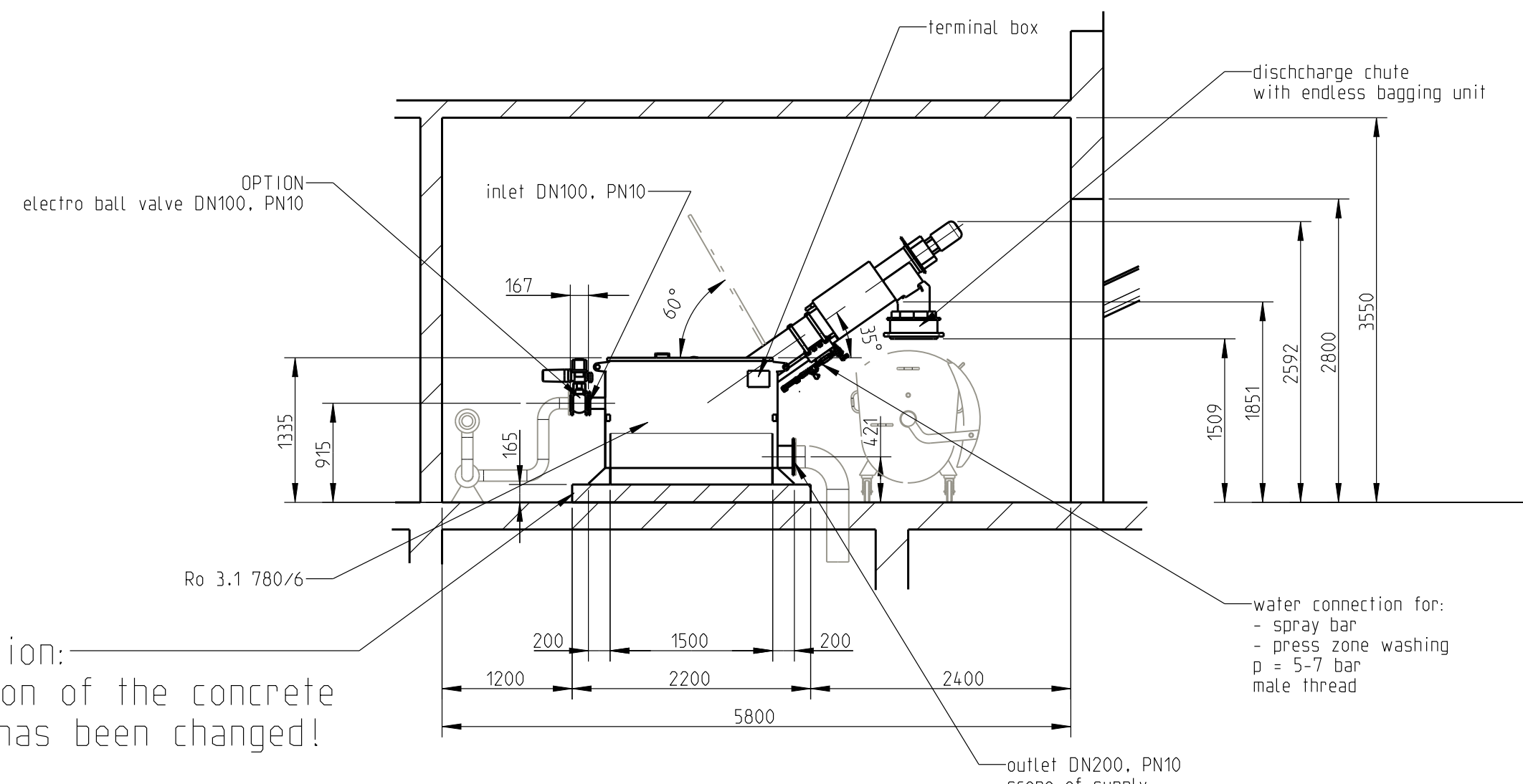


detail: drilling points Ro5 HD

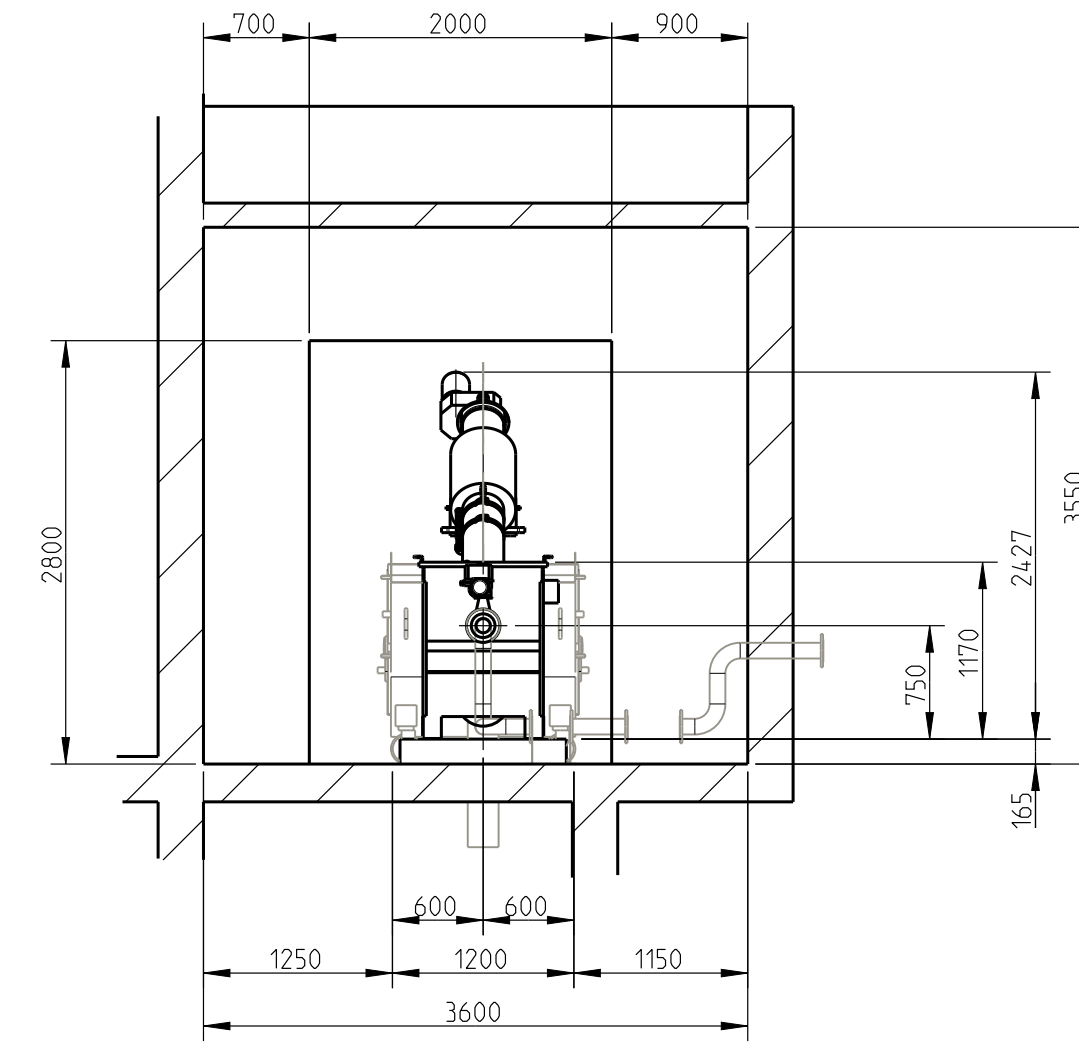


* You have to anchored only one drilling hole of the floor plate!

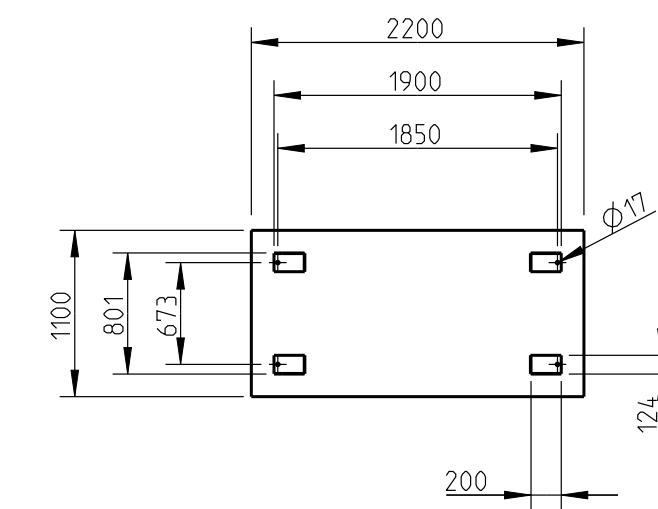
section C-C



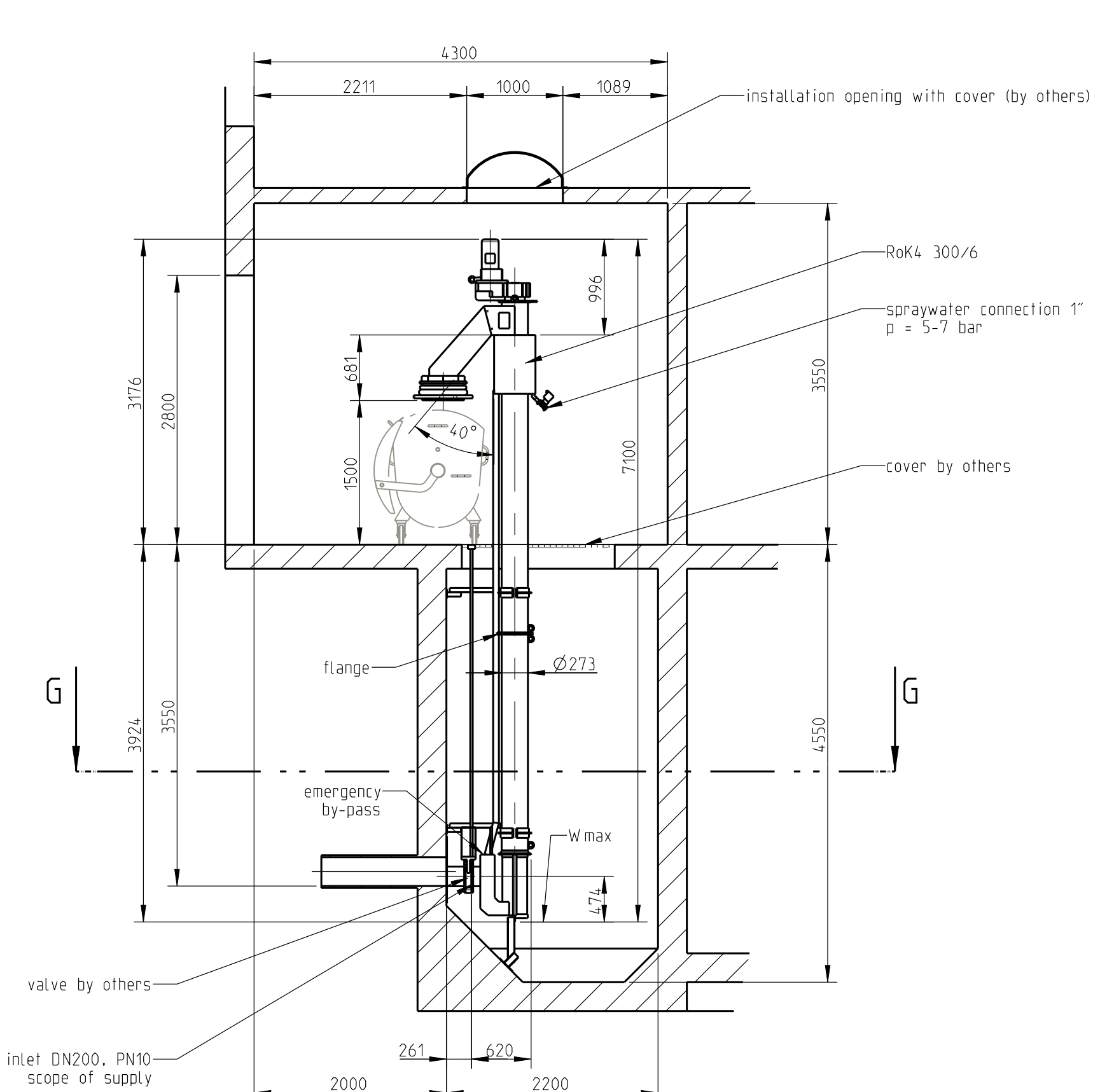
section D-D



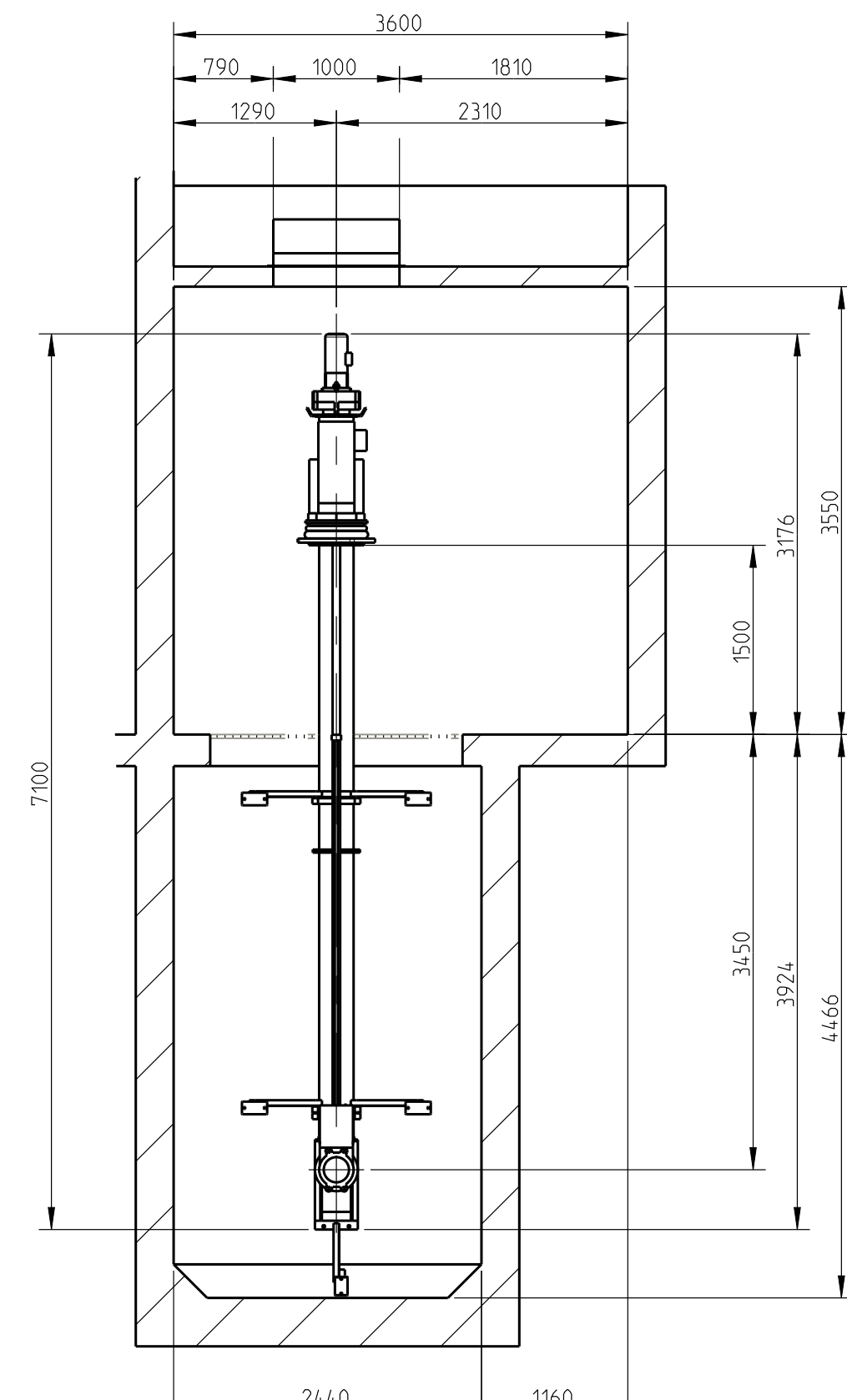
detail: drilling points Ro3.1



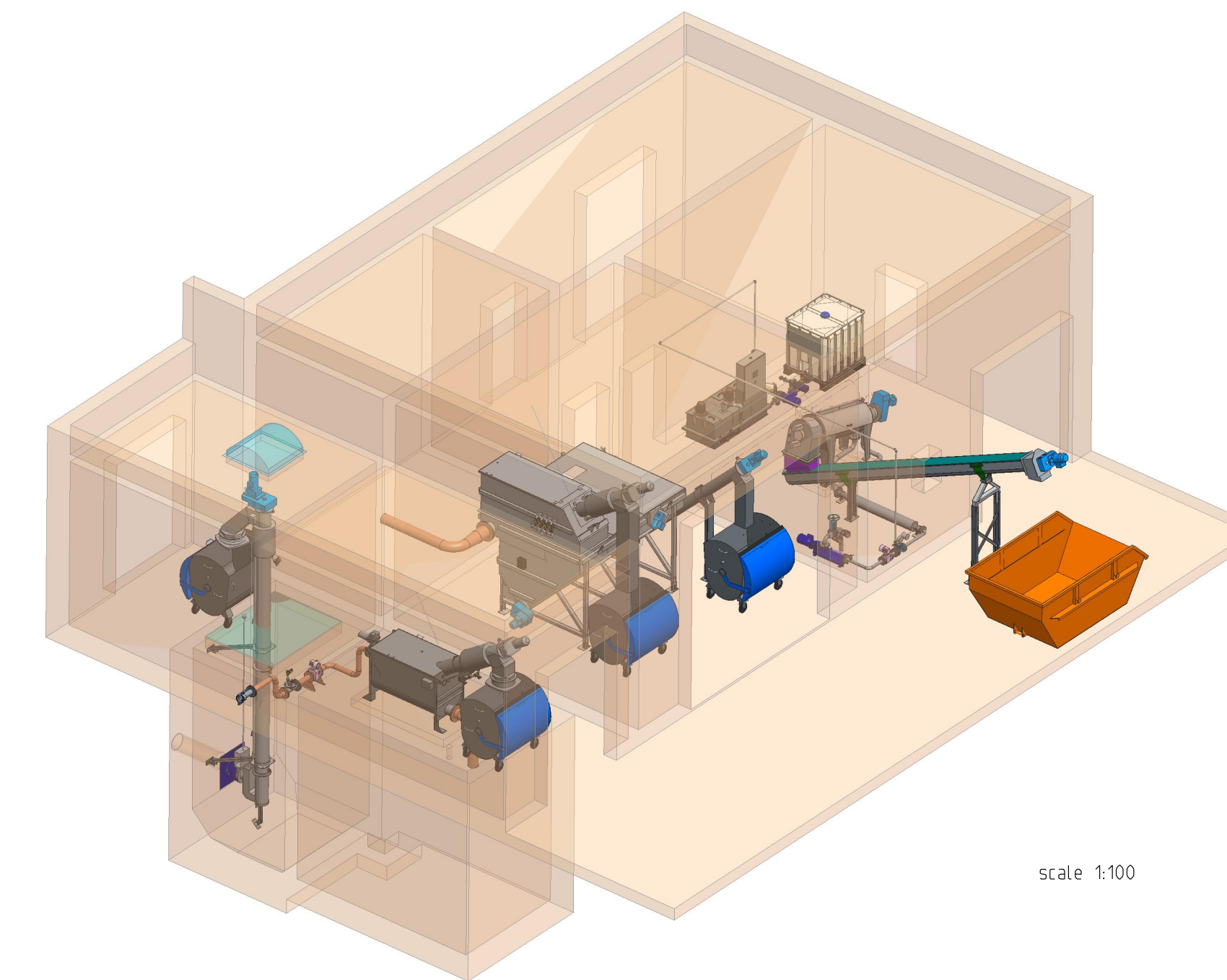
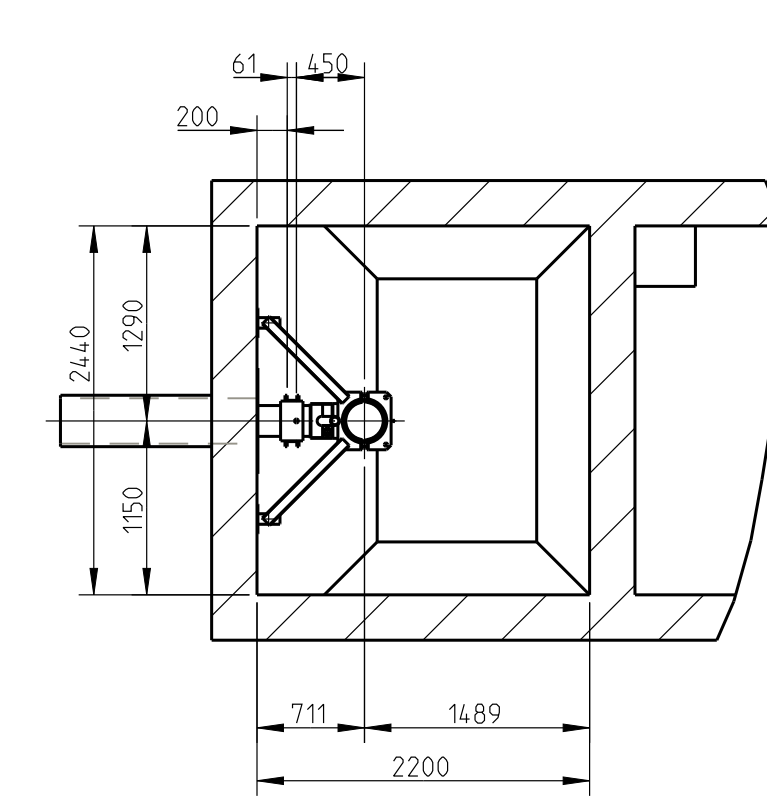
section E-E



section F-F



section G-G



scale 1:100

NOTE:

- Additional drain pipe >= 4 per thousand
- Free drain of the tank must be guaranteed!
- Additional loads (e.g. pipelines, service platforms, ...) on our plant are not allowed.
- Accident prevention acc. GUV and machine directives (railings, maintenance platforms, guards, etc...) Or country specific regulations on site!
- Supports have to be welded after installation
- Don't connect and concrete the inlet and outlet pipe line (which is on the part of the builder) before the installation of the complete plant is finished.
- The firm standing of the plant is only guaranteed after dowelling
- The customer must guarantee a free discharge outlet.
- These anchor bolts are only permissible in concrete with a sufficient resistance
- Provide sufficient lifting device (crane rail with movable hoist) above the axle of the machine) by customer
- Spray water connection by customer
Washing medium: Service water / water from the secondary clarification tank (grain <= 0.3mm) water pressure 5-7 bar
- Please provide for the necessary space demanded for installation on service work
- WARNING: Moving machine parts. Protection against accidental contact to be supplied by client according to country specific regulations.
- Fall protection to be supplied by client (type of protection acc. to country specific regulations.) (also valid for planned or existing covers of chime + 1100mm height)
- All inspection openings with cover/railing by customer
- container by customer
- All cable ducts are by customer

Diese Zeichnung ist geistiges Eigentum der Fa. HUBER SE und damit urheberrechtlich geschützt. Zuwiderhandlungen verpflichten zum Schadenersatz. This is a copyrighted drawing which is the intellectual property of HUBER SE. Any counterfeiting offender will be held liable for payment of damages.		HUBER TECHNOLOGY WATER WATER SOLUTIONS	
Technische Änderungen vorbehalten / Subject to change		ISO 2768-mk D:9233k Baerching / Tel.: +43-8642-201-0	
Rev.	Änderung	Tag	Nr.
1	18.10.17	11	11
2	19.10.2017	11	11
3	19.10.2017	11	11
4	19.10.2017	11	11
5	19.10.2017	11	11
6	19.10.2017	11	11
7	19.10.2017	11	11
8	19.10.2017	11	11
9	19.10.2017	11	11
10	19.10.2017	11	11
11	19.10.2017	11	11
12	19.10.2017	11	11
13	19.10.2017	11	11
14	19.10.2017	11	11
15	19.10.2017	11	11
16	19.10.2017	11	11
17	19.10.2017	11	11
18	19.10.2017	11	11
19	19.10.2017	11	11
20	19.10.2017	11	11
21	19.10.2017	11	11
22	19.10.2017	11	11
23	19.10.2017	11	11
24	19.10.2017	11	11
25	19.10.2017	11	11
26	19.10.2017	11	11
27	19.10.2017	11	11
28	19.10.2017	11	11
29	19.10.2017	11	11
30	19.10.2017	11	11
31	19.10.2017	11	11
32	19.10.2017	11	11
33	19.10.2017	11	11
34	19.10.2017	11	11
35	19.10.2017	11	11
36	19.10.2017	11	11
37	19.10.2017	11	11
38	19.10.2017	11	11
39	19.10.2017	11	11
40	19.10.2017	11	11
41	19.10.2017	11	11
42	19.10.2017	11	11
43	19.10.2017	11	11
44	19.10.2017	11	11
45	19.10.2017	11	11
46	19.10.2017	11	11
47	19.10.2017	11	11
48	19.10.2017	11	11
49	19.10.2017	11	11
50	19.10.2017	11	11